



Design Report

8 Princess Street
Brighton Le Sands

SJB Architects

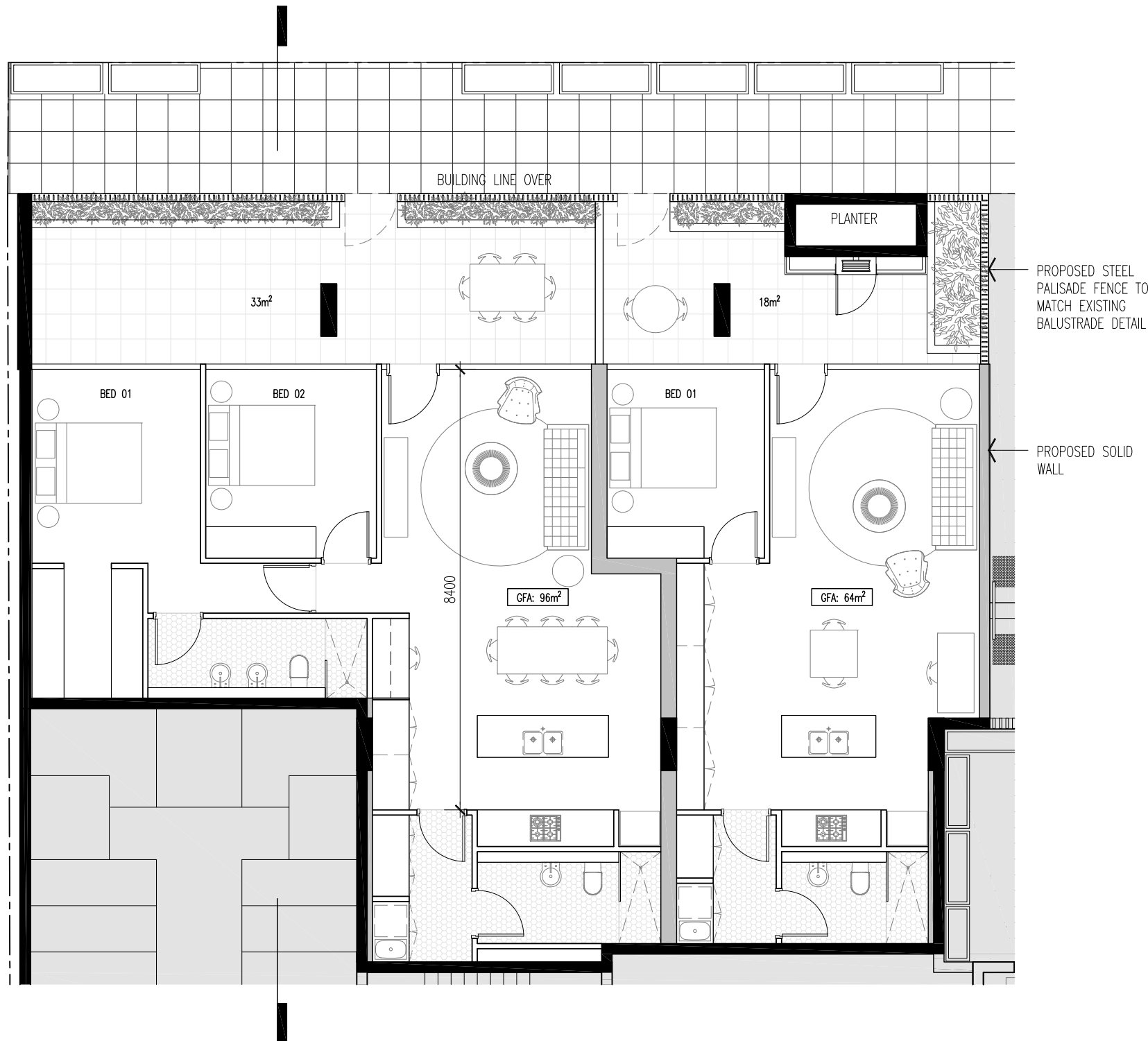


Design Report
8 Princess Street
Brighton Le Sands

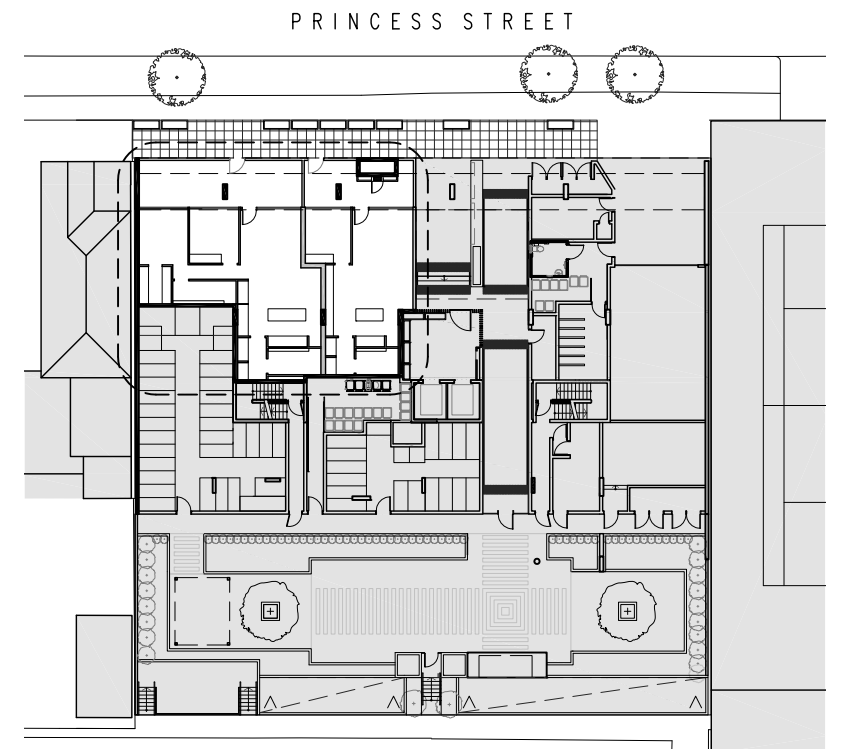
5627
Date issued: 4 April 2017
Version: 1.0
Prepared by: PC
Checked by: GS

Contact Details
SJB Architects
Level 2, 490 Crown Street
Surry Hills NSW 2010
Australia

T: 61 2 9380 9911
architects@sjb.com.au
www.sjb.com.au



Floor Plan - Proposed Apartment Layout



Existing Floor Plan - Ground Floor





Project

LUMEX

6-14 Princess Street

Job No.

5627

Scale

1:100 @ A3



Drawing

SK02

North Elevation

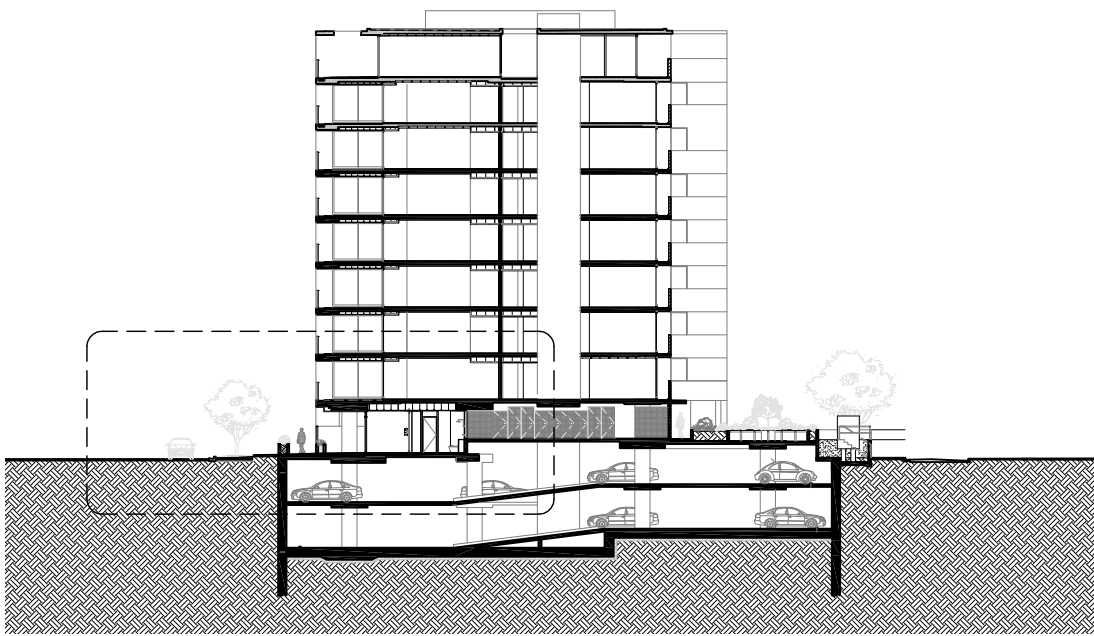
Revision

1.0

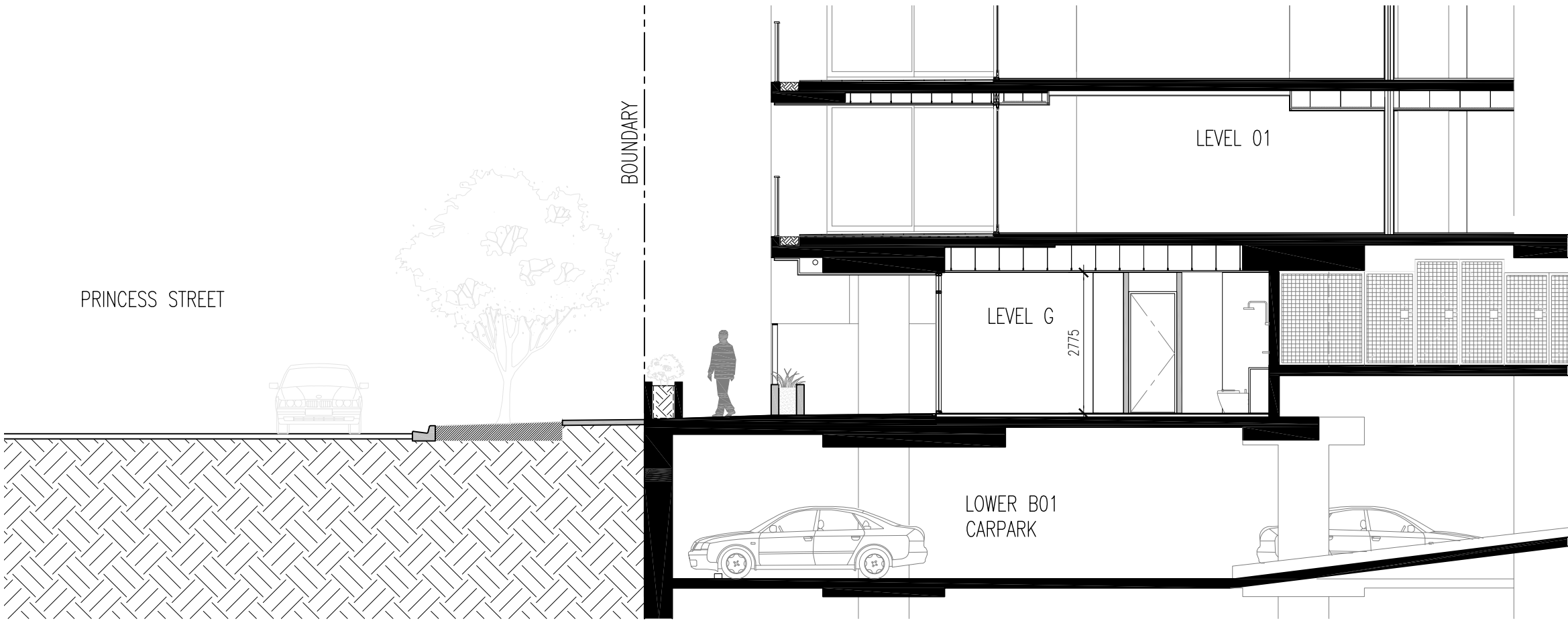
04/04/17

SJB Architects
Level 2, 490 Crown Street, Surry Hills NSW 2010
T 61 2 9380 9911 sjb.com.au
SJB Architecture (NSW) Pty Ltd ACN 081 094 724
Adam Haddow 7188 John Pradel 7004



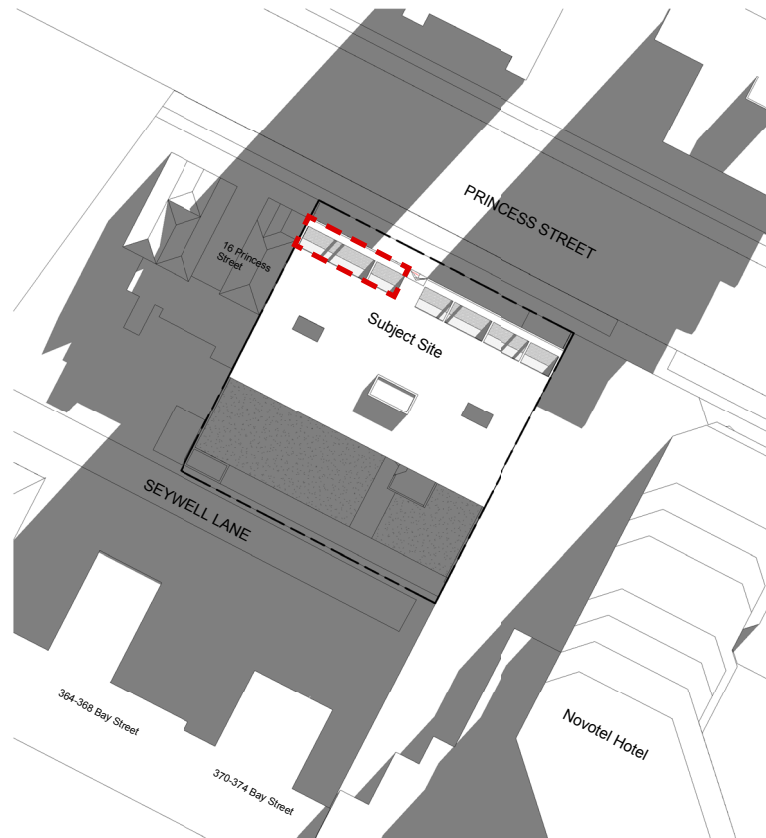


Existing Section

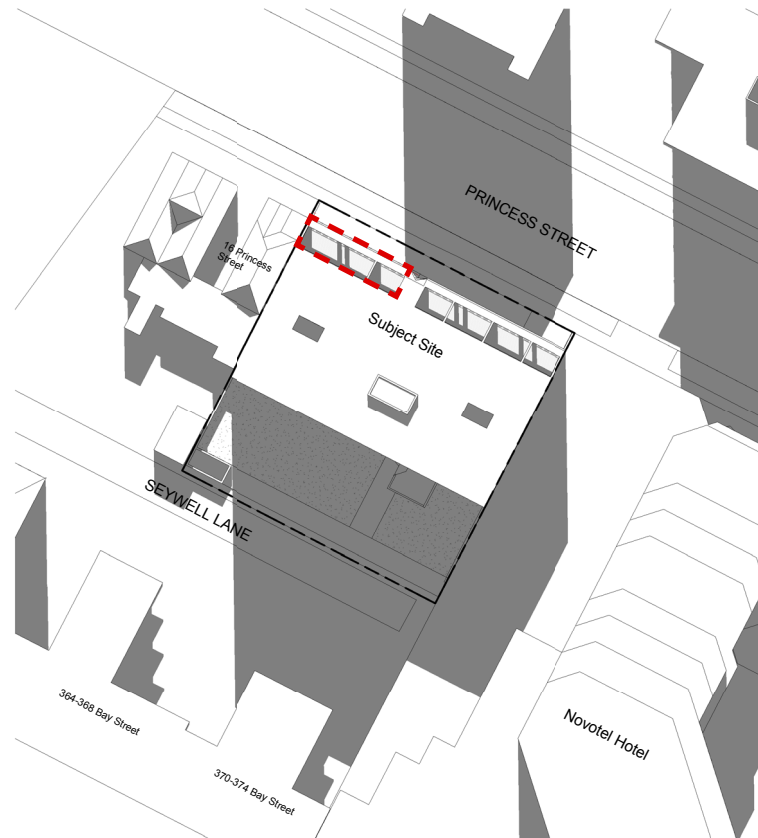


Section - Proposed Apartment Section

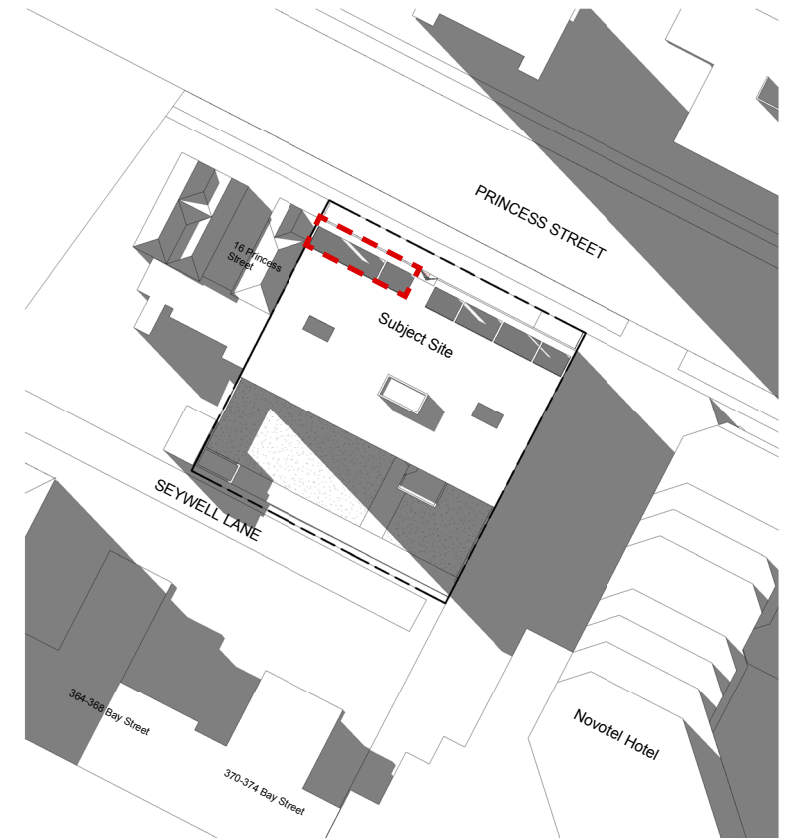




Shadow Diagram - Winter 9am



Shadow Diagram - Winter 12pm



Shadow Diagram - Winter 3pm

Solar Analysis

Achieves a minimum of 2 hours of direct sunlight on at least 1sq.m of living room glazing between 9am to 3pm, June 21st.

Approved Total: 51/67 (76%)

Proposed Total: 53/69 (76%)

Cross Ventilation

Approved Total: 53/67 (79%)

Proposed Total: 53/69 (76%)

Project

LUMEX

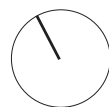
6-14 Princess Street

Job No.

5627

Scale

1:100 @ A3



Drawing

SK04

Shadow Diagrams

Revision

1.0

04/04/17

SJB Architects
Level 2, 490 Crown Street, Surry Hills NSW 2010
T 61 2 9380 9911 sjb.com.au
SJB Architecture (NSW) Pty Ltd ACN 081 094 724
Adam Haddow 7188 John Pradel 7004



SJB Architects



Contact Details

SJB Architects
Level 2, 490 Crown Street
Surry Hills NSW 2010
Australia

T: 61 2 9380 9911
architects@sjb.com.au
www.sjb.com.au